

Customer :

customer

Customer part :

customer part

Comment :

Comment

S1=5.93

S2=35.85

Tmax=432

Tp S2=471.0

PI=0.14

HI=504

Sample =753.95

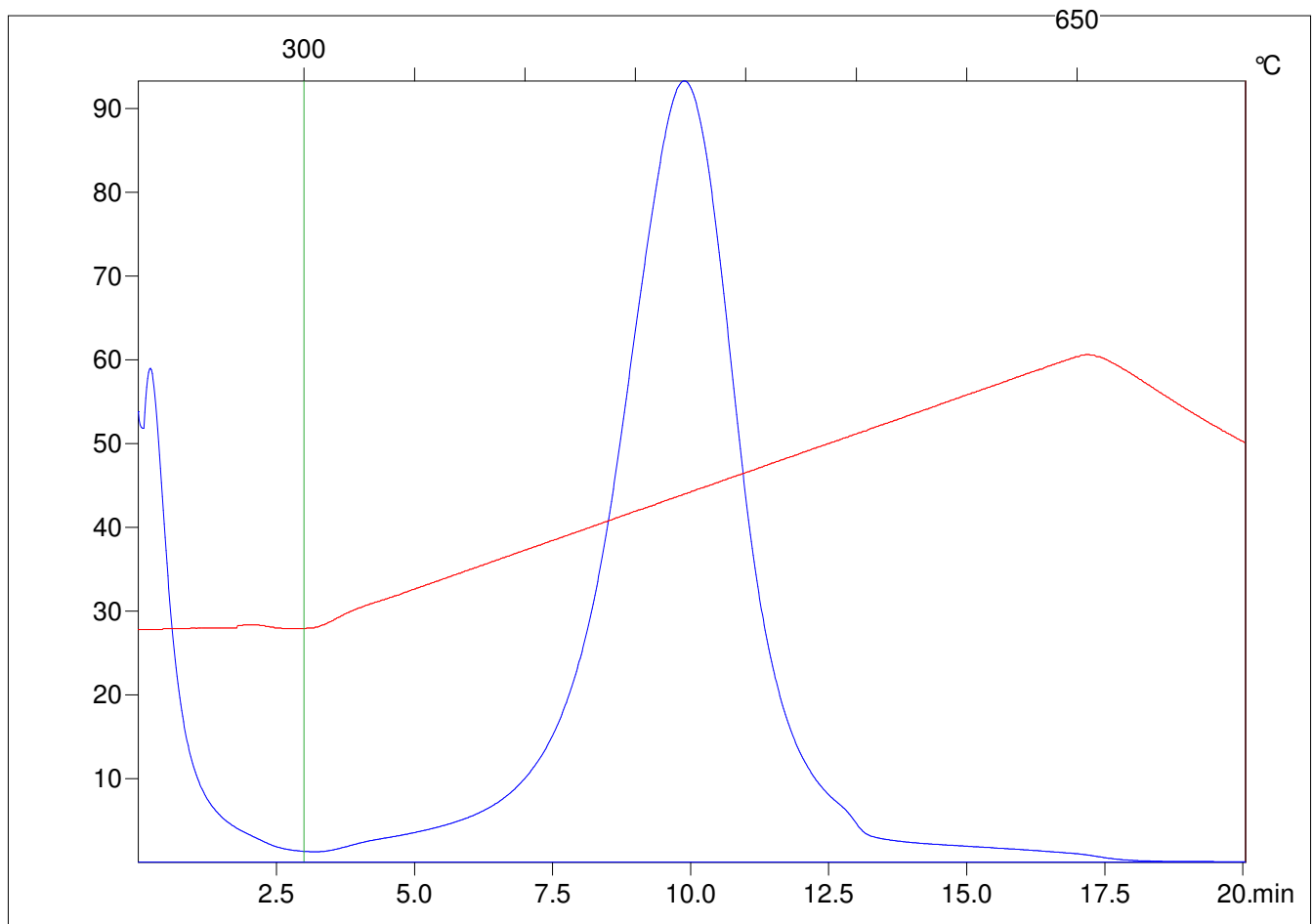
Method =Bulk Rock

Cycle=Basic

KFID(10*9)=1550

Qty =70.0

TOC=7.12



C:\VINC\PK130315\PK004.R00 : FID pyrolysis graphic

State

Pyro Status

Oxi Status